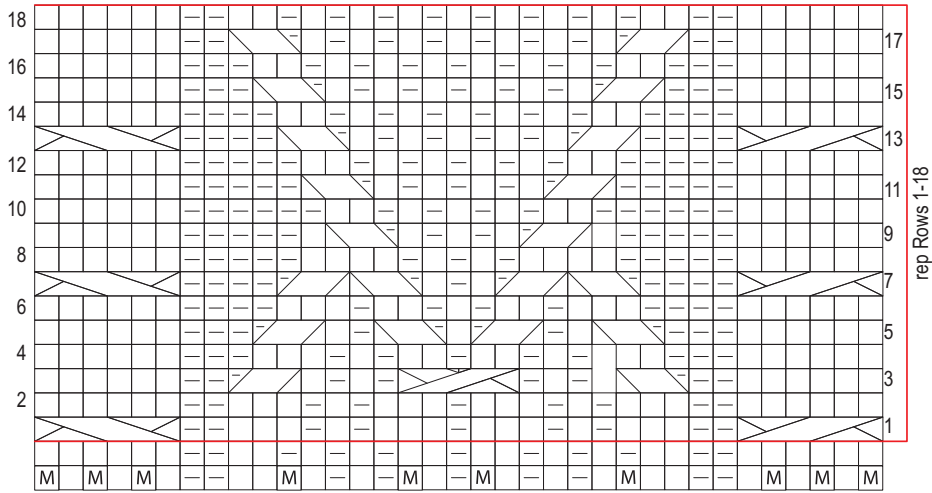


25 Cabled Hearts Pullover

Continued from page 110

CABLED HEARTS CHART



KEY

Note: First 2 rows are set up rows and are not repeated. Rep Rows 1-18 for pat.

□ = K on RS, P on WS

□ = P on RS, K on WS

M = Make 1

= C3L

= C3R

= Sl 2 to cn, hold in front, P1, K2 from cn

= Sl 1 to cn, hold in back, K2, P1 from cn

= Sl 3 to cn, hold in back, K2, sl last st from cn to LH ndl, P1, K2 from