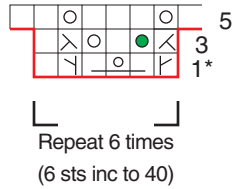


Correction for Chart

Page 132 - August, 2010

Strawberry Pie Shawlette



Written instructions are correct -  
Chart is missing first yo on Row 3.

Chart repeat - Row 3: \*K2tog, **yo**, K1, yo, ssk, K1.

**\*Note:** Row 1 is worked over 4 sts from the Set-up rows.  
Row 1 shows the 4 sts **after** the Row is worked - increased to 6 sts.  
The LL-inc is worked below the sts of the centered yo,  
and the last st shown on Row 1 is the st from the LL-inc.