

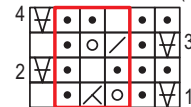
24 Urban Silk Lace Stole

Continued from page 112

KEY

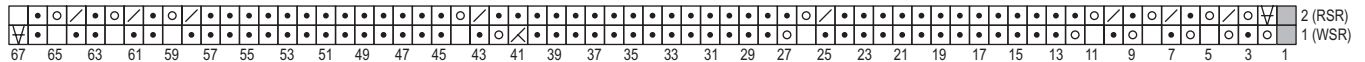
- ☐ = K on RS, P on WS
- ◼ = P on RS, K on WS
- ◻ = K2tog
- = yo
- ⊠ = K2tog-tbl
- ⊞ = Sl 1 st kwise, K2tog, pssso
- ⊡ = Sl 1 st kwise, K3tog, pssso
- ⊟ = Purl into st, but before removing st from LH needle, knit into back of the same st (inc 1 st)
- ⊞ = SSK, Sl next st over st just made by temporarily moving sts from ndl to ndl as foll:
move st just made from RH ndl to LH ndl. Sl next un-worked st on LH ndl over SSK st. Move the resulting st back to RH ndl.
- ⊡ = SSSK, Sl next st over st just made by temporarily moving sts from ndl to ndl as foll: move st just made from RH ndl to LH ndl.
Sl next un-worked st on LH ndl over SSSK st. Move the resulting st back to RH ndl.
- ◻ = indicates pattern repeat
- = no stitch
- ⊞ = Sl 1 st pwise, wyif

ZIG ZAG EYELET CHART (mult of 3 sts)

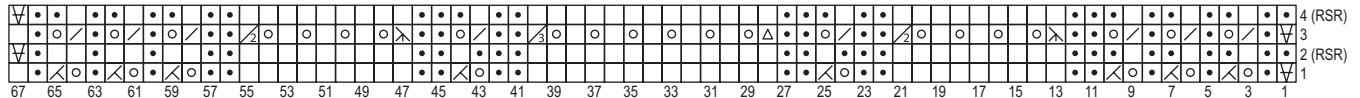


Rep Rows 1-4 for Zig Zag Eyelet Pattern

UPPER INNER BORDER CHART



MAIN AREA CHART



LOWER INNER BORDER CHART

