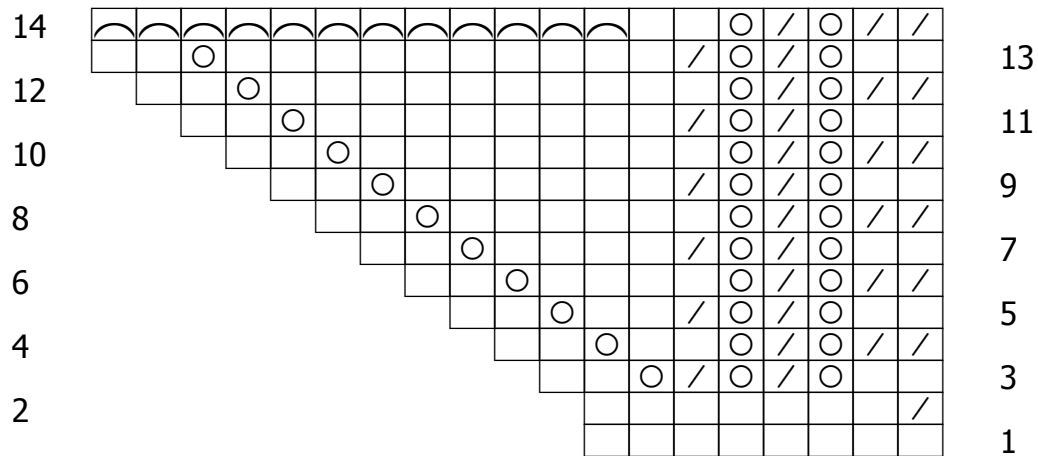

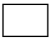
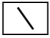
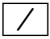

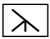
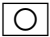


## Edging Chart



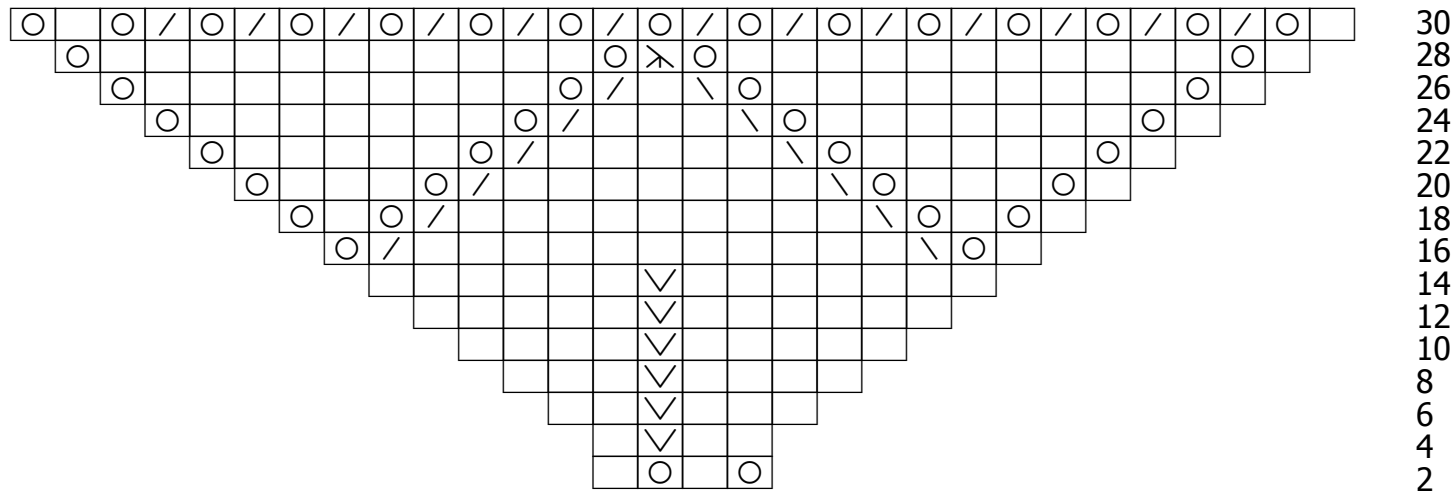
## Key

-  BO 1 st
-  Knit
-  SSK
-  K2tog
-  K1, YO, K1 into the same st
-  sl 2 sts, K1, pssso
-  yarnover

Rep rows **3-14** across live sts to attach sts to shawl.

On all even rows, the last st of the edging and next st of the body of shawl are attached by knitting the 2 sts together.

## Shawl Body Chart



All odd rows, Rows 1-31, are Knit (without increases or patt sts).

Chart is repeated 6 times around.